

ARTELUCE 6-LIGHT CHANDELIER - CAPRI - 088/6 IVORY AND GOLD



€ ~~1.270,00~~ € 889,00

Refined and elegant, this classic chandelier in ivory and gold finish is a highly prized decorative element, ideal for enhancing dining rooms, living rooms or reception areas.

The sinuous structure recalls floral and natural motifs, enriched by hanging crystals that add brightness and movement without being excessive.

SKU: 088/6-A | **Categories:** [Promotions](#), [Indoor Lighting](#) | **Tags:** [lampadario floreale](#), [lampadario ferro battuto](#)

GALLERIA IMMAGINI



DESCRIZIONE PRODOTTO

Refined and elegant, this classic chandelier in ivory and gold finish is a highly prized decorative element, ideal for enhancing dining rooms, living rooms or reception areas.

The sinuous structure recalls floral and natural motifs, enriched by hanging crystals that add brightness and movement without being excessive.

The combination of matt ivory and golden details gives the chandelier a warm and sophisticated style, perfect for both classic interiors and contemporary settings that desire a timeless decorative touch.

The 6 lights provide diffused, elegant lighting, ideal for creating a welcoming and sophisticated atmosphere. The adjustable chain allows for versatile installation depending on the height of the

ceiling.

Main features:

- Frame finish Ivory and gold
 - Floral Decoration
 - **Clear crystal**
 - 6-light
 - Adjustable chain
 - Classic Style
- Ideale per sala da pranzo, soggiorno, salone

INFORMAZIONI AGGIUNTIVE

Dimensions	ø 60 h. 50
bulbs	E14 MAX 28W
Product ready in	5 days
Rooms	Living room , Dining room , Bedroom
Style	Classic , Shabby chic , Vintage

Product ready in

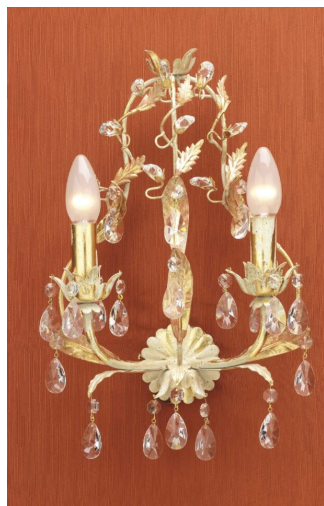
5 days

Do you want to receive this product in non-EEC countries with the exception of Switzerland and the United Kingdom? [Click here for more information!](#)

I have read and accept [Privacy Policy](#)

Send

YOU MAY ALSO LIKE...



**[Arteluce - 2-light
sconce - Capri -
088/A2](#)**